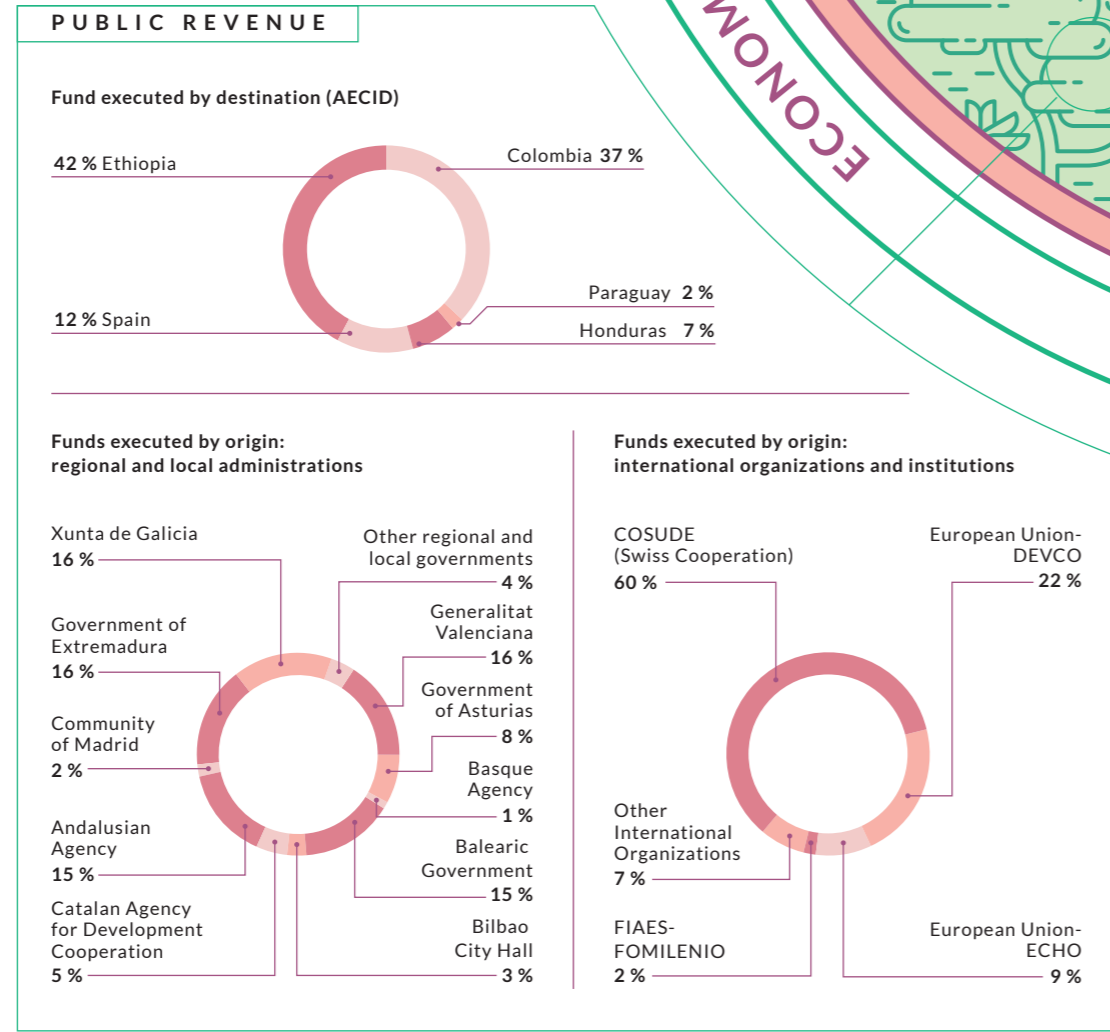
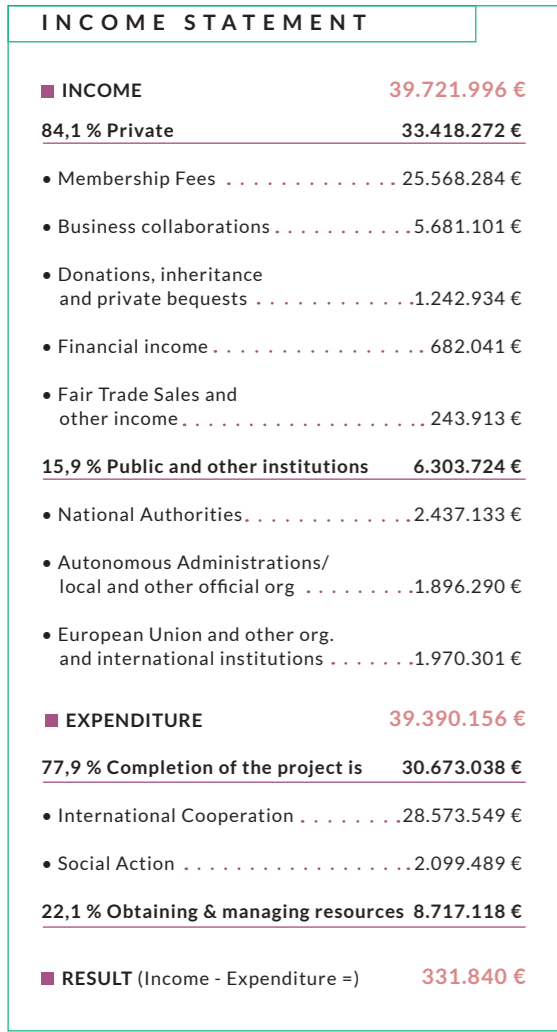
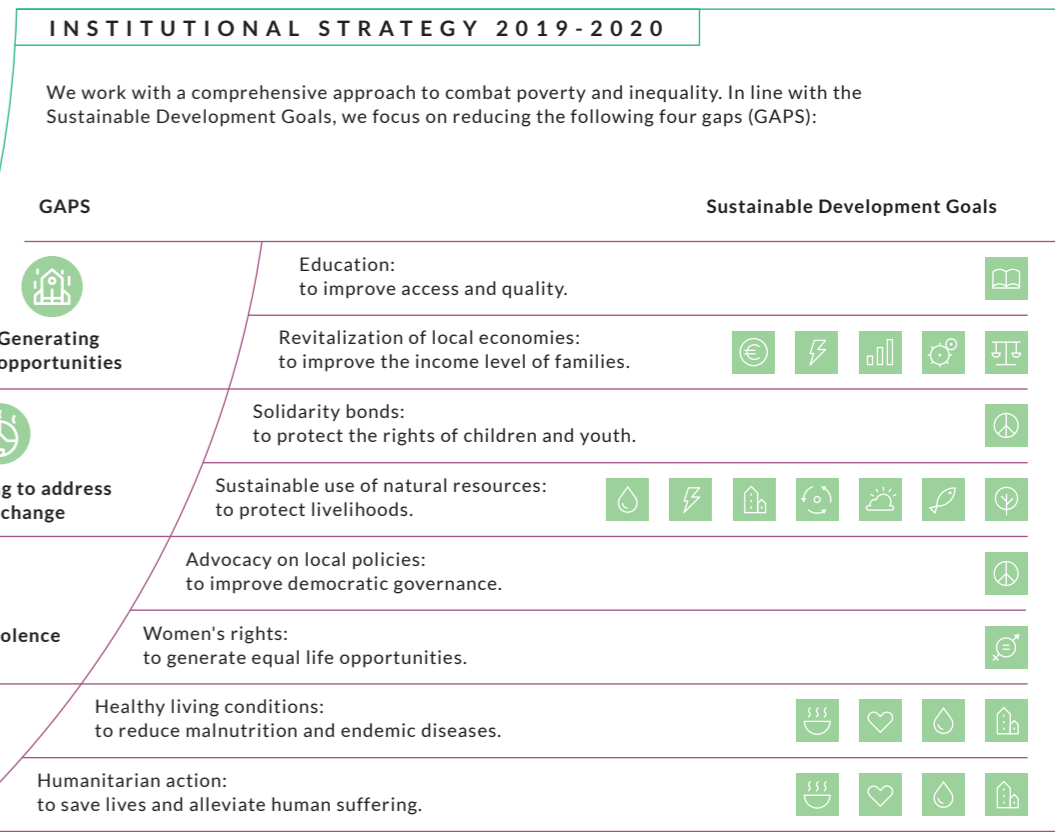
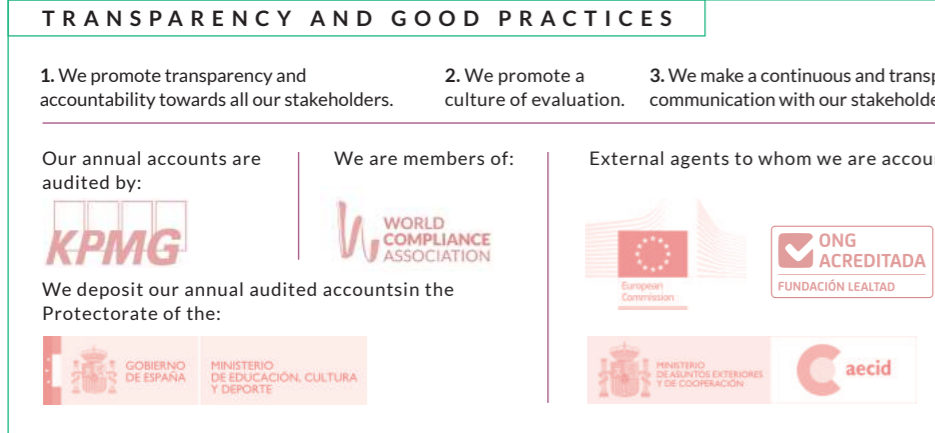
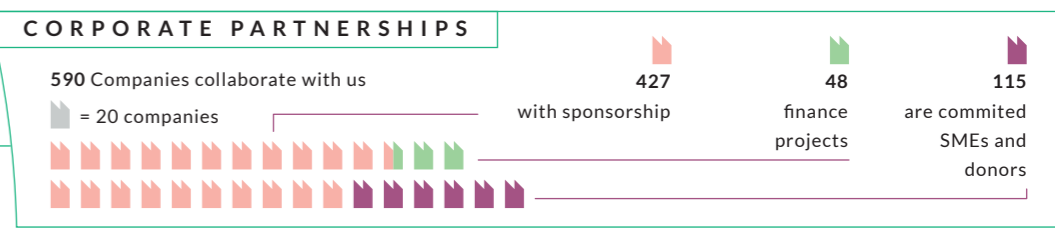
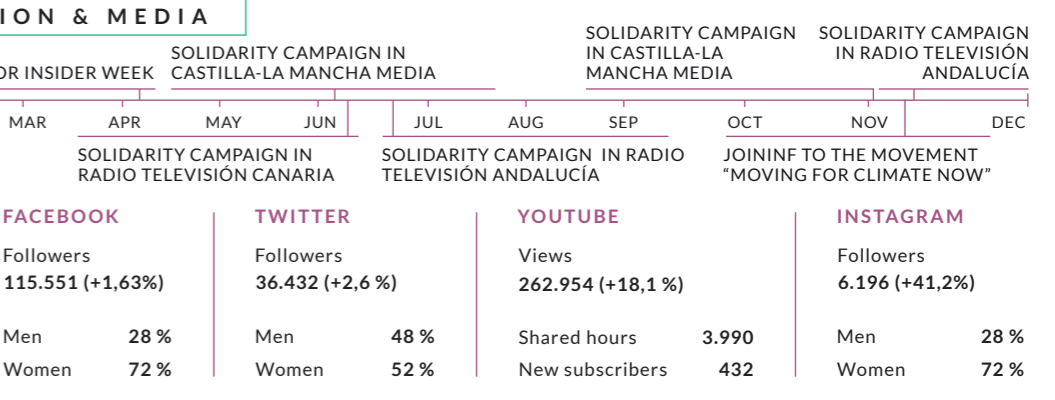
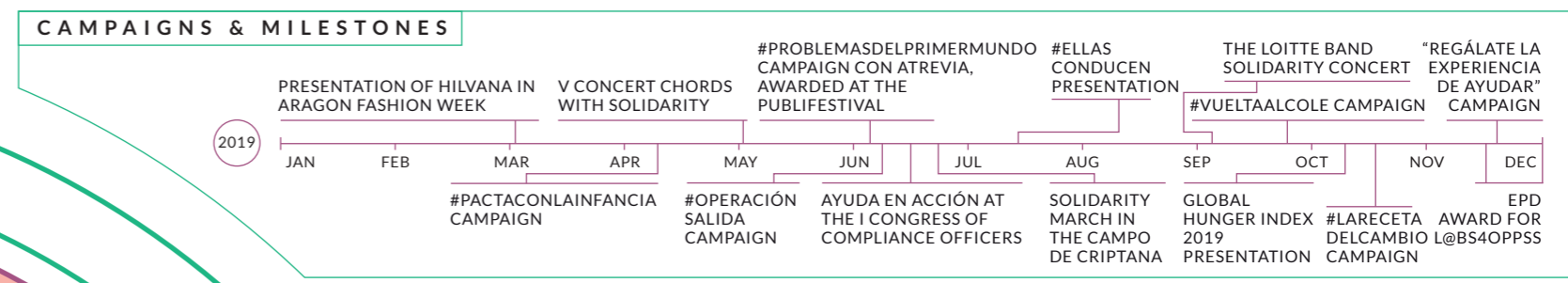
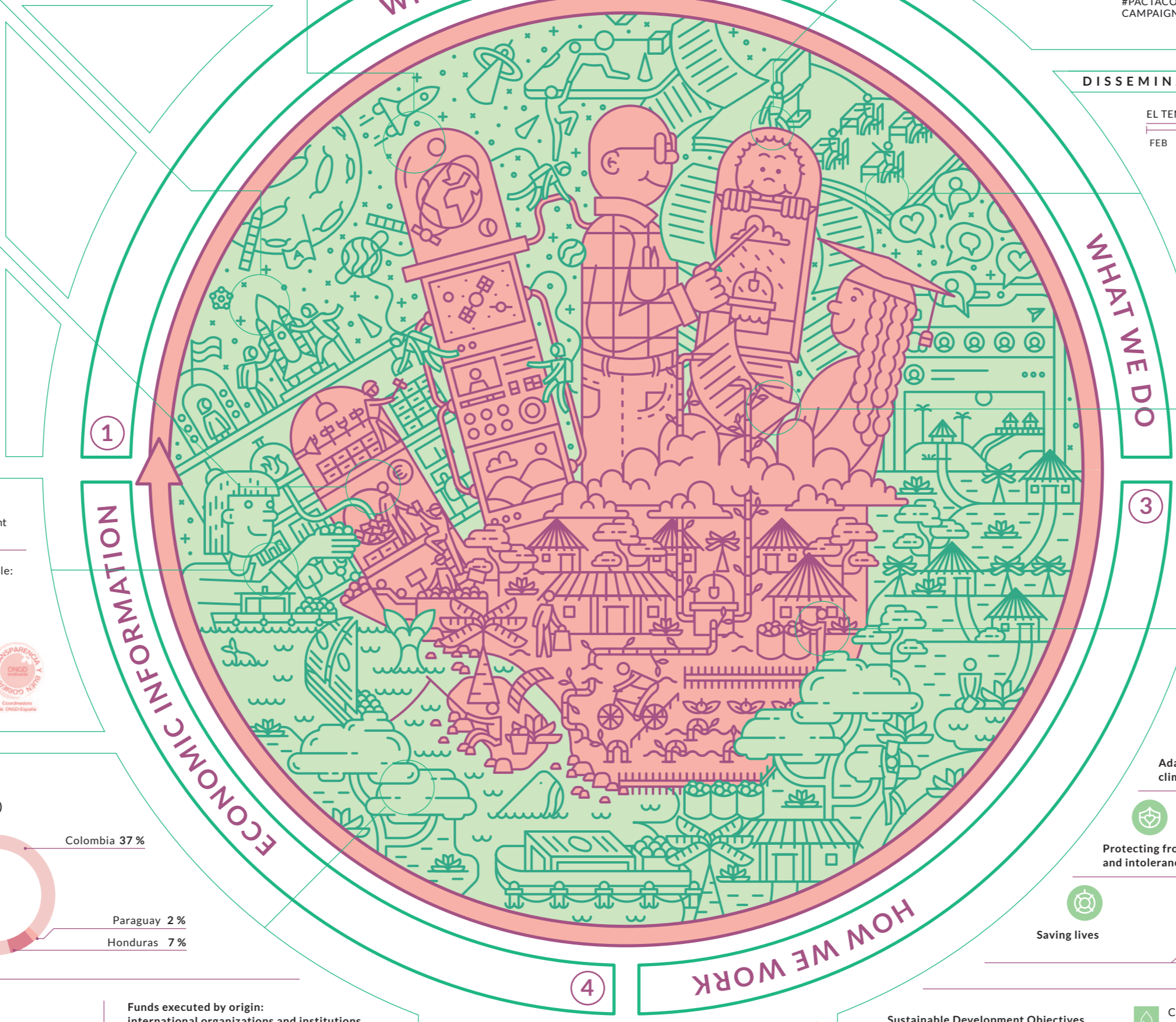
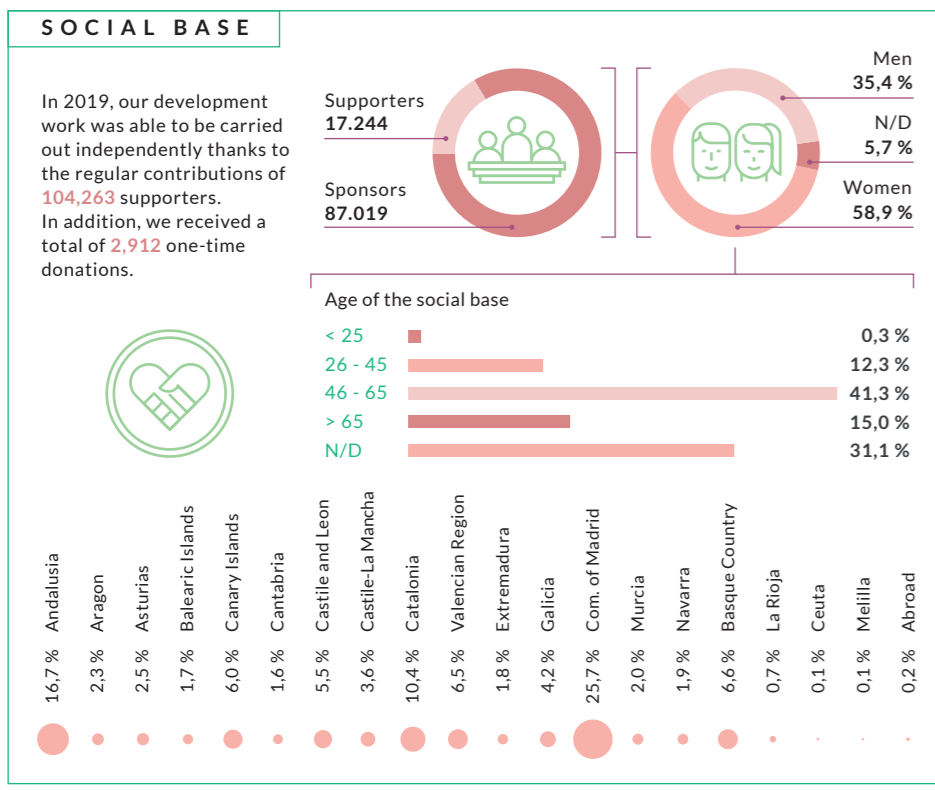
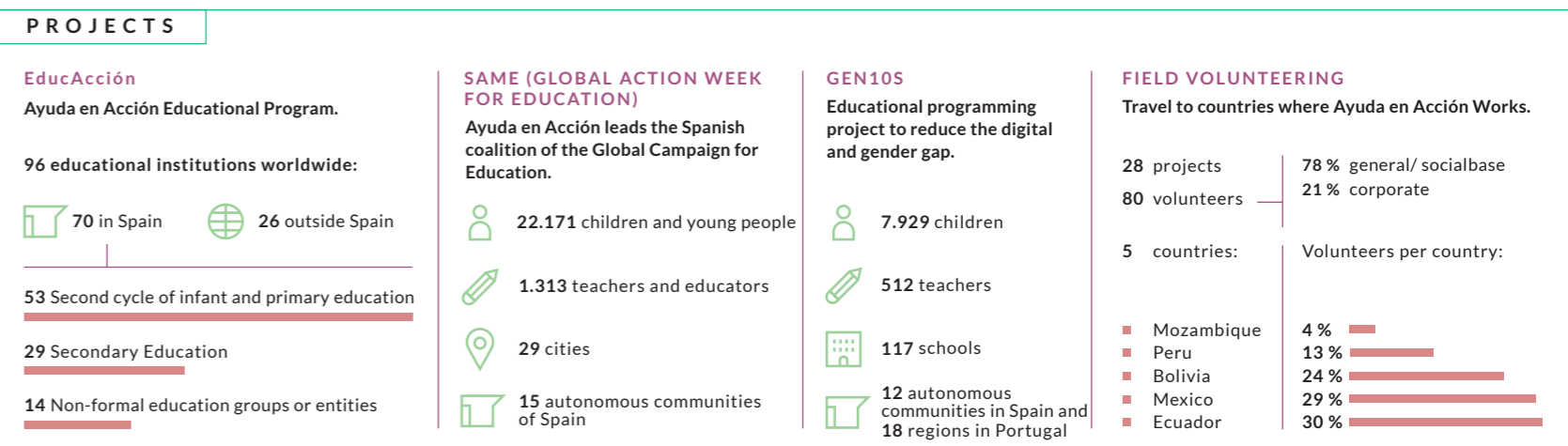
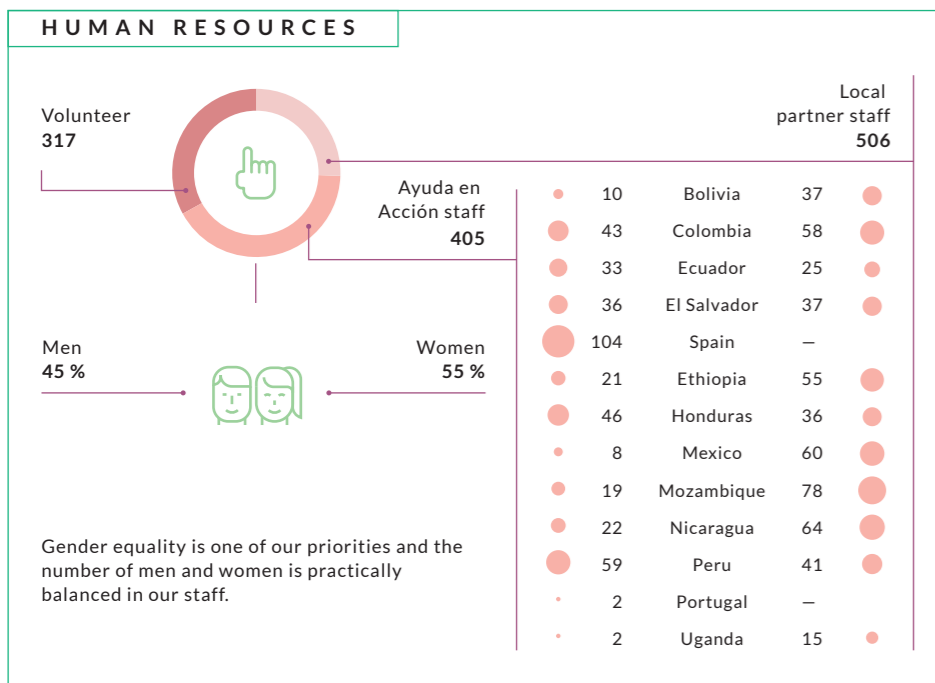


◆ A YEAR OF FIGHTING ◆



≡ AGAINST THE GAP ≡

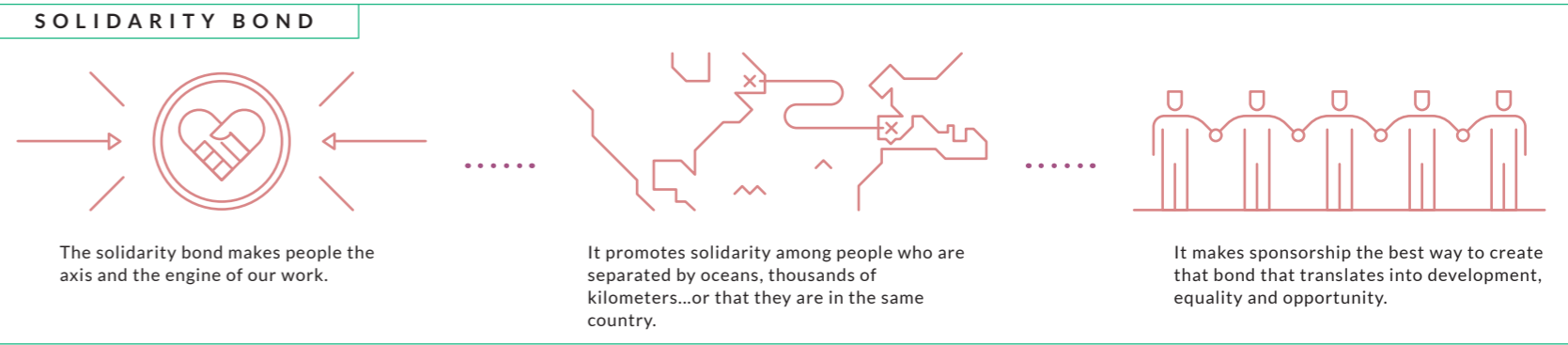




In 2019 we helped more than 800,000 people thanks to the solidarity of 104,000 supporters and 590 companies and public institutions. Today they enjoy a dignified and sustainable life where they can fully exercise their rights.

This year, we initiated a new institutional strategy focused on halting the gaps and inequalities marked by the Agenda 2030 for Sustainable Development. Together we are helping to leave no one behind.

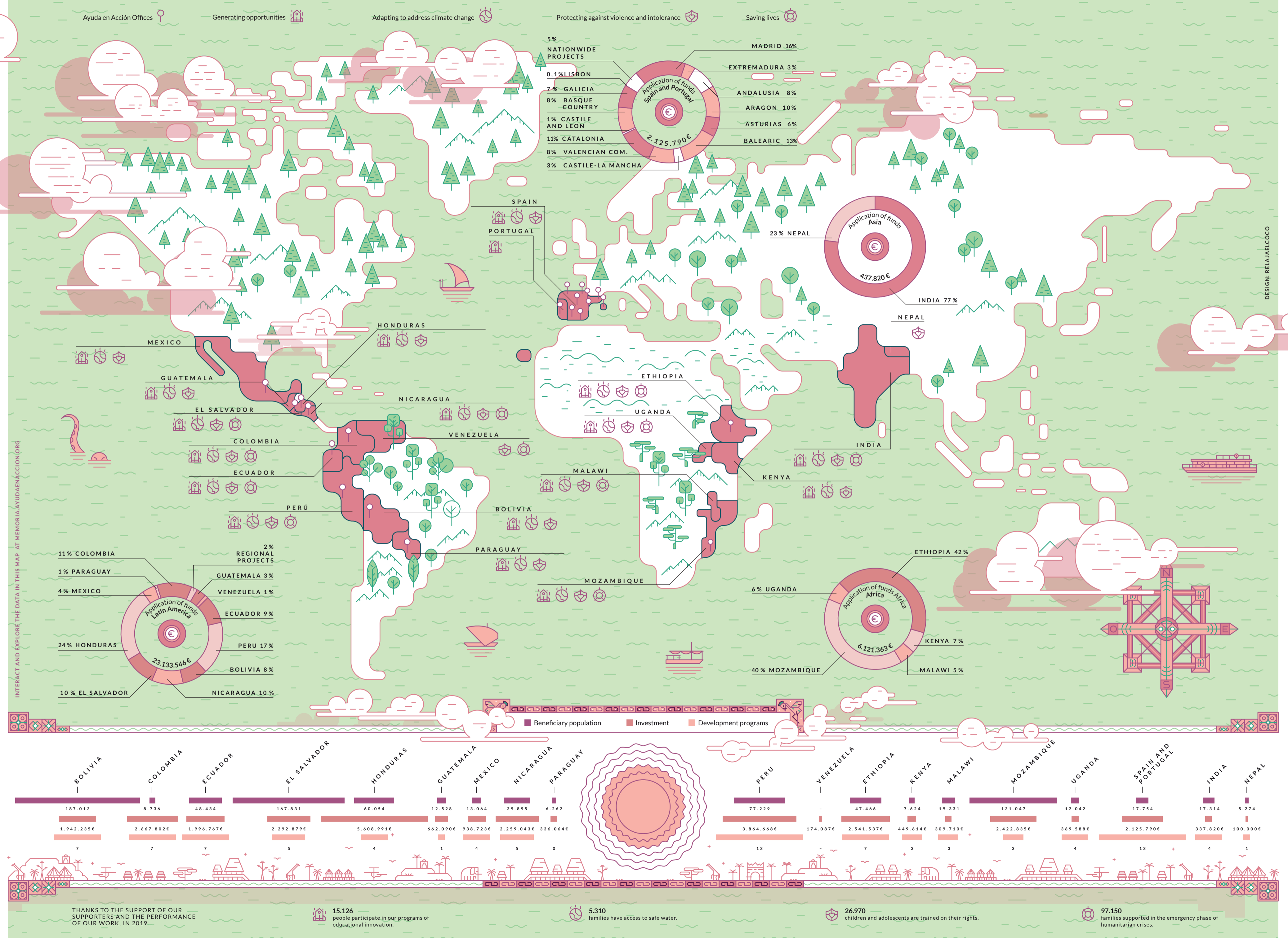
#2019enAeA



LOCAL PARTNERS

Organizations with which Ayuda en Acción collaborates to carry out the intervention in the territories in which it works.

- AFRICA**
 - Ethiopia
 - ActionAid
 - WRDA
 - AoC
 - Hope For Justice
 - WISE
 - Sas Sahel Ethiopia
 - CIFA
 - Kenya
 - ActionAid
 - Kirira Foundation
 - Malawi
 - ActionAid
 - Mozambique
 - Wiwana
 - MULEIDE
 - Mundukide
 - ADEL
 - ESSOR
 - ActionAid
 - Uganda
 - CEFOR
 - Global AIM
 - Jesuit Refugee Service
 - Uganda(JRS)
 - ActionAid
- ASIA**
 - India
 - Chinthana Foundation
 - SAI
 - Rural Human Development Center (RHDC)
 - Sans Grammonati Sansthan
 - Nepal
 - Maiti Nepal
- LATAM**
 - Ecuador
 - Proyecto Salesiano Chicos Trabajadores de la Calle
 - Ecuadorian Populorum FundProgressio (FEPP)
 - Regional Emerald Ibarra Corporation for Training and Integral Development (CEFODI)
 - Ecuadorian Populorum FundProgressio (FEPP)
 - Regional Latacunga
 - Peru
 - Rural School of Education and Health (ESCAES)
 - Center for Research and Entrepreneurship for Integral Development La Libertad (CIEDI)
 - Center for Agricultural Development (CEDAP)
 - Arariwa Association (ARARIWA)
 - Ideas Center-Center for Development Studies and Promotion (DESCO SUR)
 - Network of Entities for Solidarity Development (REDES)
 - Communication Promotion Development and Liberation (COPRODELI)
 - Institute for Research and Social Promotion (DIPS)
 - Association for the Andean Amazon Development (Huñuq Mayu)
 - CERF
 - Bolivia
 - North-South Intercultural Foundation
 - Center for the Promotion of Peasant Agriculture (CEPAC)
 - Educational Multiservice Center (CEMSE)
 - Agricultural Promoters (PROAGRO)
 - Loyola Cultural Action (ACLO)
 - Instituto Politécnico Tomás Katari (IPTKIE) Salvador-Salvador del Mundo Foundation (FUSALMO)
 - Association for Cooperation and Community Development of El Salvador (CORDES)
 - Foundation for Socioeconomic Development and Environmental Restoration (FUNDESYRAM)
 - Nicaragua
 - Organization for Economic and Social Development for the Urban and Rural Area (ODESAR)
 - Motherhouse Network (REDCAM) and the Nicaraguan Community Movement of Matagalpa
 - Center for Promotion and Advisory Services in Research, Development and Training for the Agricultural Sector (PRODESSA)
 - Mother Earth Foundation (FUMAT)
 - Women and Community Economic Development Foundation (FUMDEC)
 - Motherhouse Network (REDCAM) and the Nicaraguan Community Movement of Matagalpa
 - Nicaraguan Nicaraguan Community Movement of Somoto
- AFRICA**
 - Honduras
 - Foundation in Community Action of Honduras (FUNACH)
 - Mennonite Social Action Commission (CASM)
 - Christian Organization for Integral Development of Honduras "OCDIH" and Ayuda en Acción
 - Honduras
 - Fundación en Acción Comunitaria de Honduras (FUNACH)
 - Comisión de Acción Social Mennonita (CASM)
 - Organismo Cristiano de Desarrollo Integral de Honduras "OCDIH" y Ayuda en Acción
 - Mexico
 - Patronato Pro Educación Mexicano A.C.
 - Children's Support Foundation FAI Sonora
 - Civil Advocacy for Development (ECCOS-INCID)
 - Colombia
 - Solidarity Development Corporation (CDS)
 - Instituto Mayor Campesino (IMCA)
 - Vallepaz Corporation
 - ECOSS Corporation
 - Association for Peasant Development -ADC
 - CINDAP
 - Guatemala
 - ASORECHASEDECHI
 - Mancomunidad Copan Chorti
 - Mancomunidad Montaña Gigante



DESIGN: RELAJAELCOCO

Visit
memoria.ayudaenaccion.org
and discover interactive data and
more information about the **#2019enAeA**

